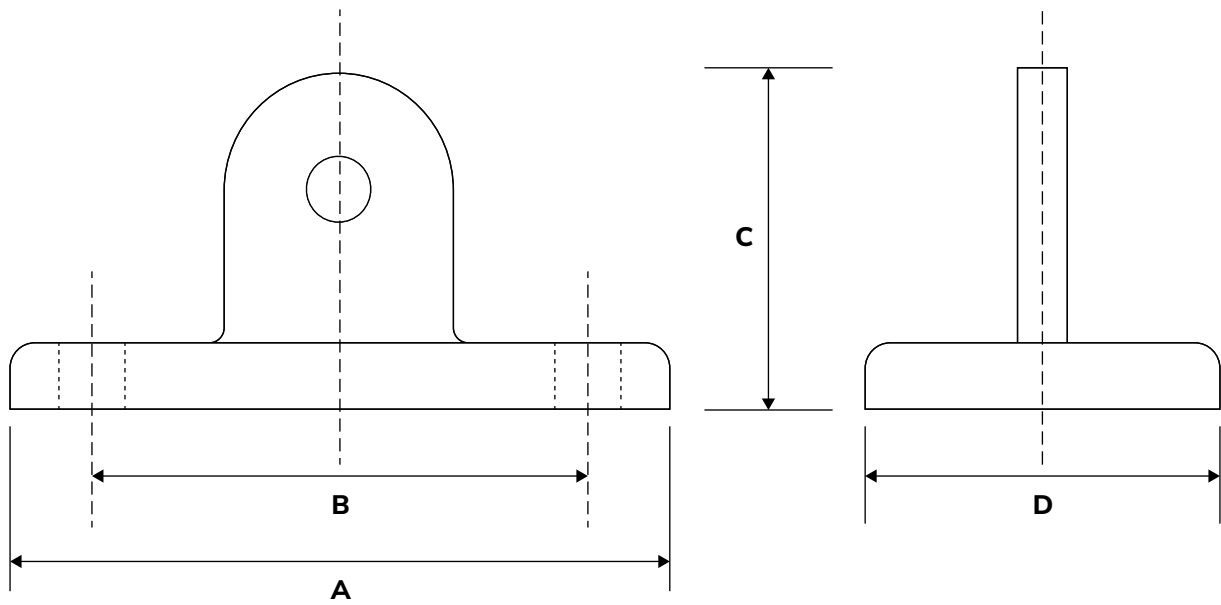




KEY CLAMP SYSTEM
 KC169M SWIVEL BASE / GALVANISED



CODE	A	B	C	D	HOLE DIA.
KCS-33.7-SB	112mm	85mm	55mm	52mm	11mm
	CAN BE USED IN CONJUNCTION WITH A SWIVEL FITTING. NOT SUITABLE FOR USE AS A BASE FITTING IN GUARDRAIL SYSTEMS AND NOT DESIGNED TO WITHSTAND LATERAL LOADS.				
DIMENSIONS ARE PROVIDED AS A GUIDE ONLY AND MAY VARY SLIGHTLY. DRAWING NOT TO SCALE.				WELDITNFS.COM	